



connect



VERNE Q. POWELL® FLUTES

CATALOG

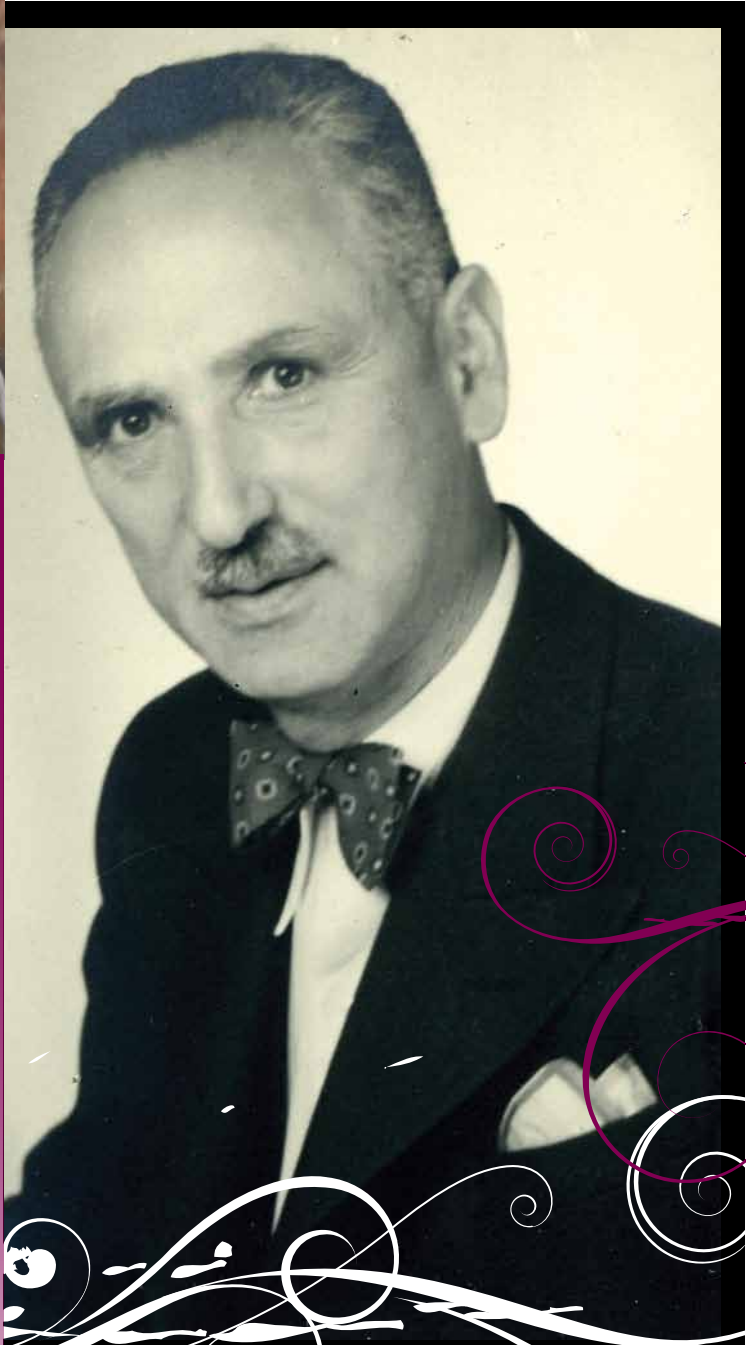
family and friends



STEVEN WASSER

Ownership of a Powell instrument connects you to a network of people, past and present, who contribute to the character of our instruments. My affinity for music came from my father, Adi Wasser, who grew up in Vienna and played violin. The passion I have for quality came from my grandfather, Jacob Wasser, who had a saying, 'Only rich men can afford to buy poor things.' Come meet some members of the Powell family.

STEVEN WASSER, *Owner*



“Only rich men can afford to buy poor things.”

GRANDPA JACOB

“Rolex watch, Mercedes CLK,
Leica camera, Powell flute.
Just four of my prized possessions.
Guess which one paid for the other three?

The Powell Flute.

Purity of tone, perfect intonation,
mechanical excellence –

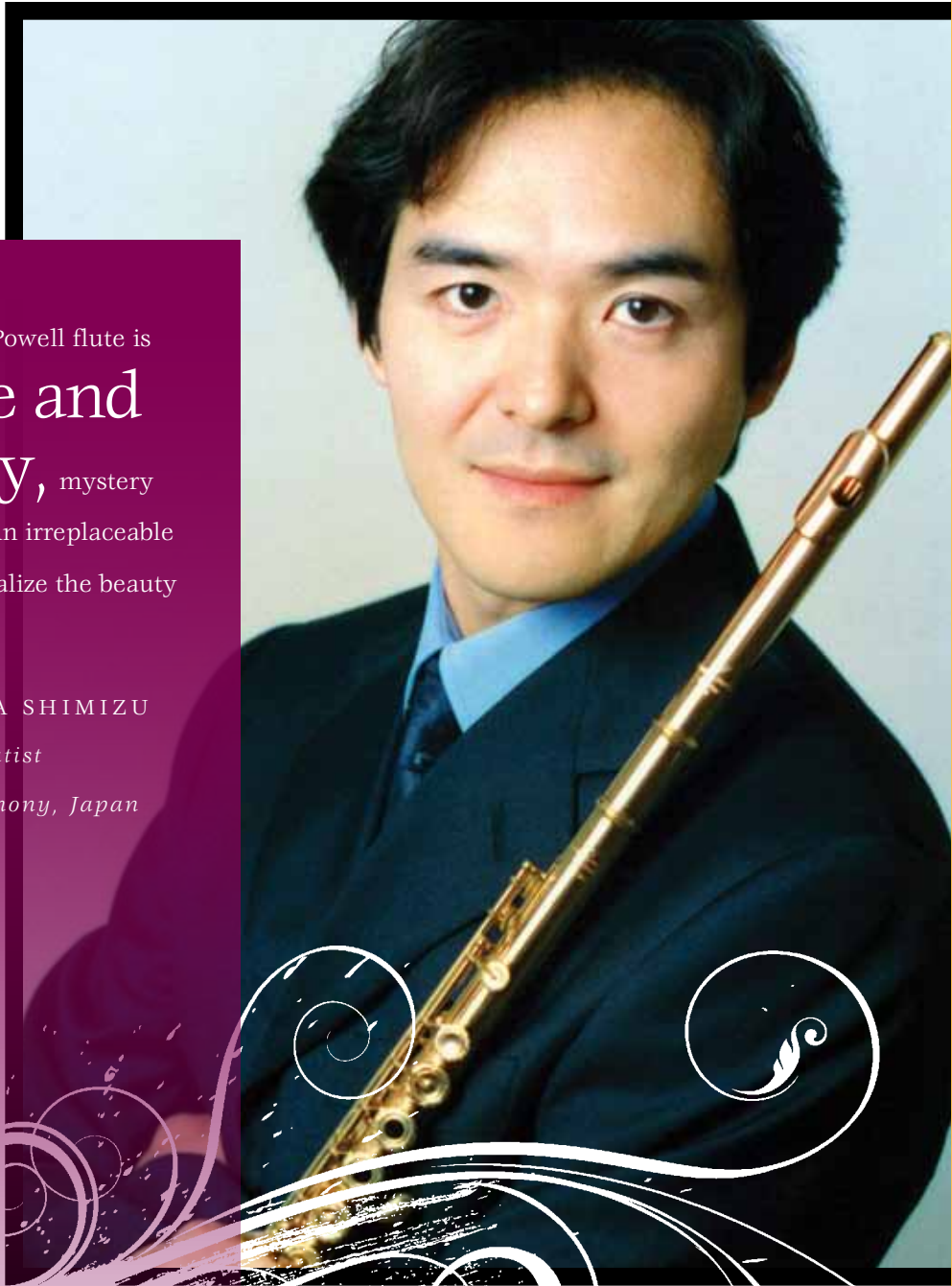
**the true instrument
of seduction.”**

IAN ANDERSON, *Jethro Tull*



 www.powellflutes.com/About Us/History

nobutakashimizu



“For me, the Powell flute is home and family, mystery and future. An irreplaceable partner to realize the beauty of music.”

NOBUTAKA SHIMIZU
Principal flutist
Kyoto Symphony, Japan

Handmade Custom Flutes

Powell's Handmade Custom flutes have been the "gold standard" of the flute world for more than eight decades. Powell Custom flutes have been celebrated for their flexibility of color, ease of response and reliability; this is why instruments made in the 1920s are still being played today. Every Custom flute continues this tradition and is handmade to exacting specifications by our skilled artisans. Each instrument is a highly functional tool as well as a stunning work of art. The Powell Custom flute is available in a multitude of precious metals and with a variety of features. The choice is yours.



Aurumite®, sterling silver keys (top); 14k rose gold, 14k keys (bottom)

BODY MATERIAL*	MECHANISM	SOLDERED TONE HOLES	DRAWN TONE HOLES
Sterling silver	Sterling	Available	Available
Aurumite® 14k	Sterling	Available	n/a
9k rose gold	Sterling	Available	Available
10k yellow gold	Sterling	Available	Available
10k yellow gold	10k yellow gold	Available	Available
14k rose gold	Sterling	Available	Available
14k white gold	Sterling	Available	n/a
14k rose gold	14k rose gold	Available	Available
14k white gold	14k rose gold	Available	Available
19.5k rose gold	Sterling	Available	Available
19.5k rose gold	10k yellow gold	Available	Available
19.5k rose gold	14k rose gold	Available	Available
Platinum	Sterling	Available	n/a
Platinum	10k yellow gold	Available	n/a
Grenadilla wood**	Sterling	n/a	n/a
Grenadilla wood**	14k rose gold	n/a	n/a

FLUTE OPTIONS

Footjoint:	B footjoint with gizmo	B footjoint without gizmo	C footjoint
G keys:	Offset	Inline	
Pitch:	A-440	A-442	A-444
Cups:	American (closed)	French (open)	
Mechanism:	Pinless	Pinned (metal flutes only)	

CUSTOMIZATIONS

	C# trill	10k tone holes	Lip plate engraving
	D# roller	14k tone holes	Key engraving
	Split-E	14k tone holes, posts, ribs, rings	
	G disc		

* Tubing thicknesses vary by materials, Sterling silver is available in a choice of three tubing thicknesses, .014", .016" or .018"; Aurumite 14k has .016" tubing, all gold bodies are .012" and platinum is .010".

**All grenadilla flutes include a pinless mechanism.

nicole mitchell



Photo by Brad Walseth

When Chicago jazzwoman Nicole Mitchell's flute and piccolo were stolen after a concert in Italy, she was overwhelmed by the support she received. The theft of the instruments, valued at \$10,000, had one positive outcome: a brand new instrument from Powell. Mitchell couldn't be happier with the replacement.

“I feel so blessed to be playing my Powell.”

NICOLE MITCHELL

 www.powellflutes.com/Bible

Conservatory & Signature Flutes

The Handmade Conservatory flute traces its ancestry to Mr. Powell's first Commercial flute, made in 1928. Today's Conservatory models combine the aesthetics of the traditional Handmade Custom model and the flexibility of the "Powell Sound." The Conservatory flute features French (open) cups, pointed arms, drawn tone holes (made with our patented Zinki™ technology), the Modern Powell Scale, a fully pinless mechanism with paper adjustments and a hand-cut Custom headjoint (more information on page 11). You may also choose a .016" sterling silver or Aurumite® 9k body, which is an elegant combination of 9k rose gold and sterling silver. Additional options are available as follows:



Handmade Conservatory Aurumite 9k flute, pinless mechanism

Conservatory

PITCH*	FOOTJOINT**	G KEYS	MECHANICAL OPTIONS	MODEL # SILVER	MODEL # AURUMITE 9K
A-442	B footjoint	Inline		50000	50900
A-442	B footjoint	Offset		50001	50901
A-442	B footjoint	Offset	Split-E	50004	50904
A-442	B footjoint	Inline	C# trill key	50050	50950
A-442	B footjoint	Offset	C# trill key	50051	50951
A-442	B footjoint	Offset	Split-E, C# trill key	50054	50954

Since 2002 the Signature flute has been the most economically priced entirely sterling silver flute available. Made completely at the Powell workshop in Massachusetts, these instruments are designed to provide the "Powell Sound" in an entry level professional flute. Each Signature flute is made with .016" sterling silver tubing, French (open) cups, pointed arms, drawn tone holes, the Modern Powell Scale, a pinned mechanism with hidden adjusting screws and a Signature headjoint.



Signature Flute

Signature

PITCH	FOOTJOINT**	G KEYS	MECHANICAL OPTIONS	MODEL # SILVER
A-442	B footjoint	Inline		42000
A-442	B footjoint	Offset		42001
A-442	B footjoint	Offset	Split-E	42004
A-442	B footjoint	Inline	C# trill key	42010
A-442	B footjoint	Offset	C# trill key	42051
A-442	B footjoint	Offset	Split-E, C# trill key	42015

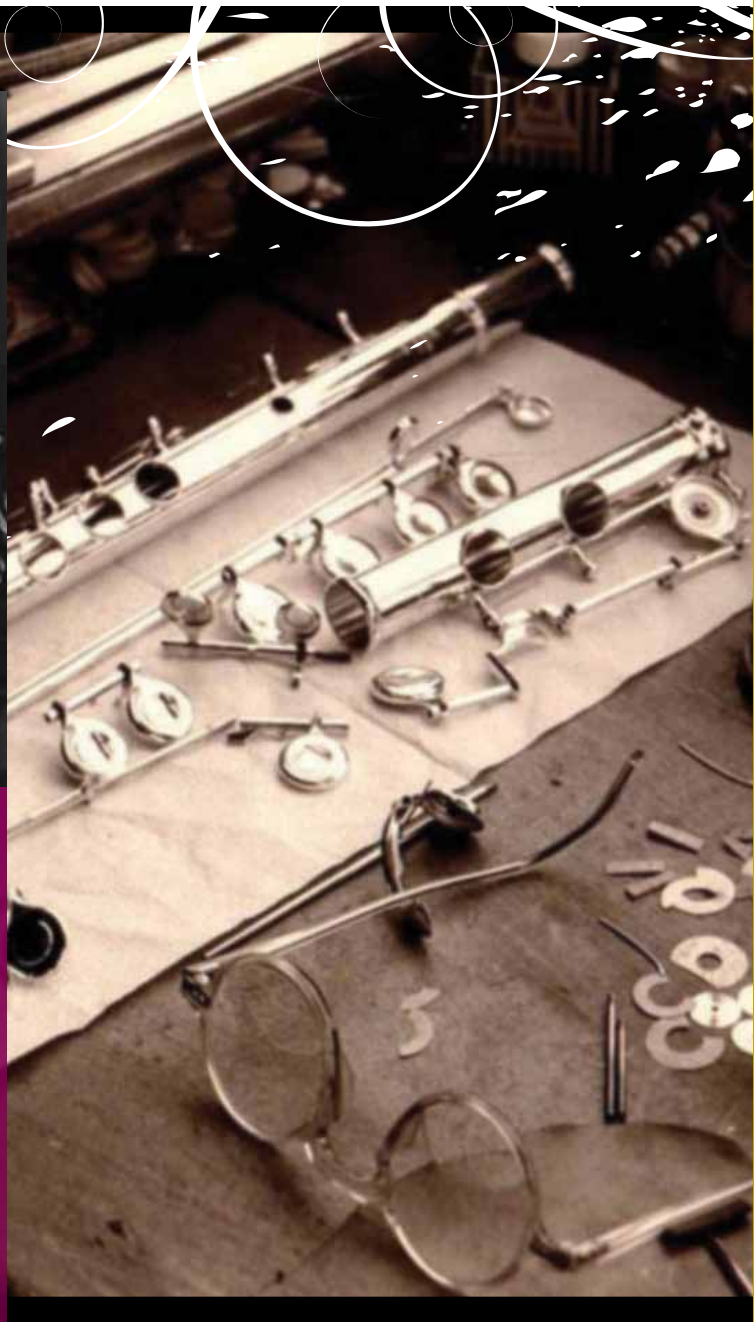
*A-444 is also available at no charge.

**C footjoint is available as well.

verne q. powell



VERNE Q. POWELL



Dr. Barry Sloane was a young ophthalmologist and flutist in 1951. Upon his arrival at the Powell shop, Dr. Sloane noticed that one of Mr. Powell's eyes was closed and tearing profusely. Dr. Sloane opened his black medical bag, examined Mr. Powell's eye, and removed a chip of metal from Powell's cornea. Dr. Sloane departed with a used Powell flute and Mr. Powell's gratitude. One month later Barry Sloane was the proud owner of new Powell flute #1142, the only Powell flute known to have Verne Powell's signature engraved on the flute by Mr. Powell himself.

Powell Sonaré® Flutes

Verne Powell developed the Ardeleve flute around 1951 by placing a Powell headjoint on a flute made in France. Today's Powell Sonaré model is based on this concept and was established in 2002. Most of the Powell Sonaré models are assembled in the USA and include a hand-cut Powell headjoint and a Powell body made at our Boston area workshop using Powell's patented Zinki™ technology.



PS-708

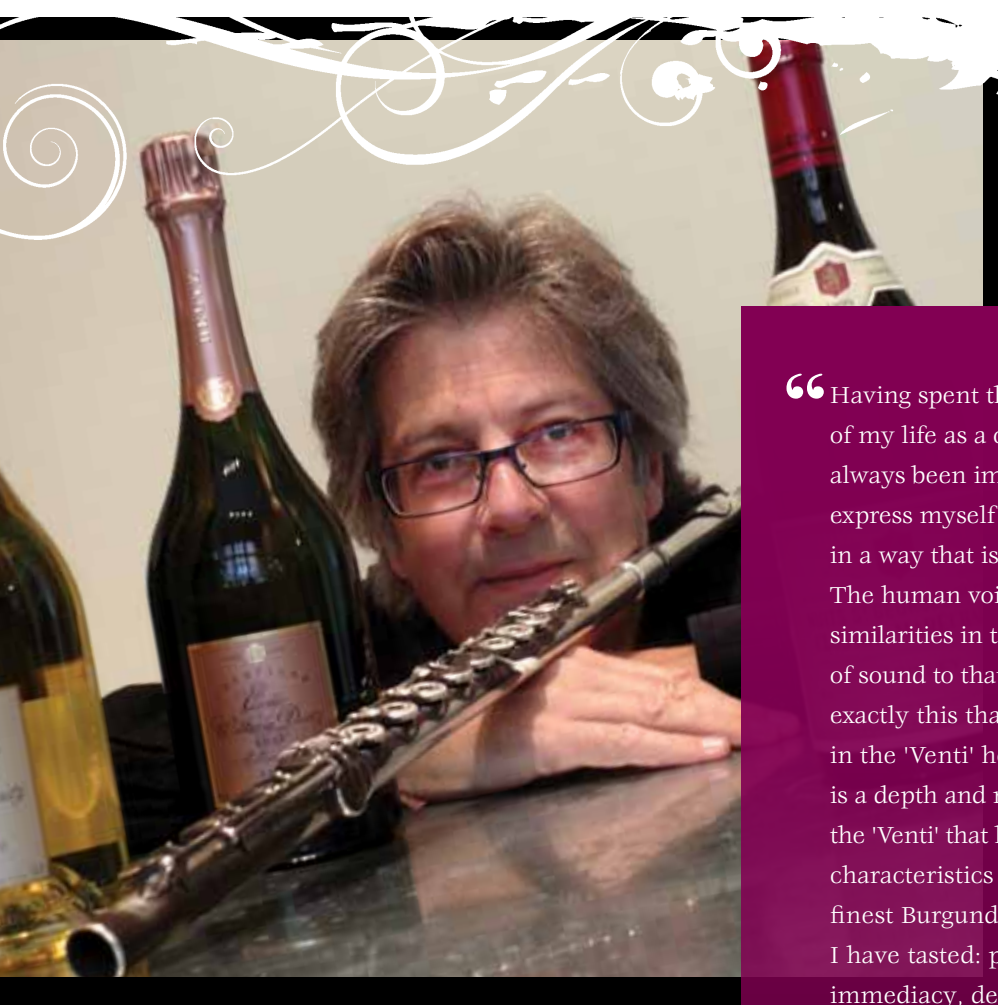
BASIC MODELS	BODY MATERIAL	ARMS	COUNTRY OF ORIGIN*	BODY PLATING	KEY PLATING
PS-501	Nickel silver	Y-arms	USA	Silver	Silver
PS-505	Nickel silver	Pointed	USA	Silver	Silver
PS-601	Sterling silver	Y-arms	USA	Silver	Silver
PS-705	Sterling silver	Pointed	USA	Silver	Silver
PS-708	Sterling silver	Pointed	Taiwan	Rose gold	Silver
PS-709	Sterling silver	Pointed	Taiwan	Rose gold	Rose gold

MODEL OPTIONS**	FOOT JOINT	G KEYS	SPLIT-E	CUPS
BGF	B foot	inline	no	French
BOF	B foot	offset	no	French
CGF	C foot	inline	no	French
COF	C foot	offset	no	French
BEF	B foot	offset	yes	French
CEF	C foot	offset	yes	French
BGA	B foot	inline	no	American
BOA	B foot	offset	no	American
CGA	C foot	in-line	no	American
COA	C foot	offset	no	American
BEA	B foot	offset	yes	American
CEA	C foot	offset	yes	American

* All headjoints are sterling silver Powell Signature headjoints, made at the Powell workshop in Massachusetts. Flute bodies are all made at Powell using Powell's patented Zinki™ process. Keys are assembled in Asia. Final assembly takes place in Massachusetts.

** For example: a PS-61BOF would have sterling silver body, B foot, offset G, and open hole cups.

pauledmund-davies



“Having spent the early part of my life as a chorister, it has always been important for me to express myself through the flute in a way that is close to singing. The human voice has so many similarities in terms of production of sound to that of the flute. It is exactly this that I have found in the 'Venti' headjoint. There is a depth and richness with the 'Venti' that have similar characteristics to some of the finest Burgundy wines that I have tasted: power, subtlety, immediacy, depth, variety, warmth, character, evenness, contrast and smoothness. It's 'velvet' for the ears.”

PAUL EDMUND-DAVIES

Headjoints

Styles

PHILHARMONIC

SOLOIST

VENTI

SIGNATURE*



The Philharmonic has a relatively broad, flat lip plate. Articulation is crisp and clean, and the style produces a deep, rich tone with a broad dynamic range.

The strength and flexibility of this headjoint allows the player to fill a hall or perform the quietest passages easily, with complete command. The slightly curved lip plate offers quick articulation and a full range of colors.

The Venti was developed by Mr. Paul Edmund-Davies to mirror his experience of singing in a cathedral choir. This headjoint has excellent depth of sound through all three octaves, and a very resonant and free third octave.

The Signature uses the lip plate of the Soloist style in combination with a specially designed wall to produce a relatively free blowing headjoint with the "Powell Sound."

Materials

TUBING	LIP PLATE	WALL	CROWN
Sterling silver .014"	Sterling silver	Sterling silver	Sterling Silver
Sterling silver .016"	9k rose gold	10k yellow gold	10k yellow gold
Aurumite 9k	10k yellow gold	14k rose gold	14k rose gold
Aurumite 14k	14k rose gold	19.5k rose gold	19.5k rose gold
9k rose gold	19.5k rose gold	Platinum	
10k yellow gold			
14k white gold			
14k rose gold			
19.5k rose gold			
Platinum			
Grenadilla wood			

* Signature style is only available with .016" sterling silver tubing, lip plate and crown. Some material combinations are special order only.

nicolamazzanti

“The Powell Signature Piccolo is a responsive, professional instrument with resonant low notes and an easy upper register. The scale is quite perfect and a joy to play.”

NICOLA MAZZANTI

Piccolo soloist

Maggio Musicale

Fiorentino Orchestra

Firenze, Italy



Custom & Signature Piccolos

The piccolo player can depend on Powell instruments to produce a strong, colorful sound with excellent intonation throughout the scale. Custom piccolos are offered in several wood and precious metal options, and the tone holes are reinforced with phenolic inserts to provide stability throughout the instrument. These fine piccolos are finished with Pisoni Star pads and hand tuned for exceptional performance.



Kingwood, 14k rose gold keys

Custom Piccolos

WOOD TYPE	MECHANISM	CUSTOMIZATIONS
Grenadilla	Sterling silver	Pitch: A-440, A-442, A-444
Grenadilla	14k rose gold	Split-E
Kingwood	14k rose gold	Profiled embouchure
		Wave embouchure
		Classic embouchure

The Signature piccolo features a grenadilla wood body, sterling silver mechanism and the Powell scale. It is an easy blowing, even instrument with responsive articulation and a consistent, sweet sound. Signature piccolos are crafted by the same artisans who make our Custom piccolos, in our Maynard, Massachusetts workshop. Every piccolo is placed in a beautiful cherry wood case with velvet lining and a leather case cover.



Signature, grenadilla, sterling silver keys

Signature Piccolos

MODEL #	WOOD TYPE	MECHANISM	SPLIT E	HEADJOINT
44420	Grenadilla	Sterling silver	no	Classic
44421	Grenadilla	Sterling silver	yes	Classic
44422	Grenadilla	Sterling silver	no	Wave
44423	Grenadilla	Sterling silver	yes	Wave

flutemakers



Since 1927 Powell's flute makers have come and gone, so how have we been able to maintain the integrity of the "Powell Sound?"

At Powell we have a very clear artistic concept about the "Powell Sound." This becomes a filter through which we run every decision about materials, process, or technology. Two researchers, Scott Cook and Dvora Yanow, produced a paper which concluded that the unique qualities associated with a particular musical instrument maker are the result of a complex organizational system rather than any one person, tool, or measurement. They described this system as "organizational learning."

Cook and Yanow focused their research on Powell and concluded that even when the mix of workers changed, "The workshop has continued to make flutes of the same quality and style as before because it — the organization, not the individual — possesses the know-how and the ability to make its own particular style of instrument."*

Connect with Powell and its flute makers, where 85 years of organizational learning are your assurance of the unique qualities of a Powell instrument.

*Journal of Management Inquiry (2,373-390)

Choices

TONE HOLES



Drawn and Rolled



Soldered

Tone holes can be separate rings which are soldered to the flute tube, or can be formed by extruding them up from the tubing itself. A technological breakthrough achieved by Powell allows the use of high temperature silver braze instead of lead solder for soldering certain tone holes. And Powell's Zinki™ technology extrudes tone holes using a patented tool (U.S. patent #7,420,109) which produces superior accuracy and tone hole quality.

CUP & ARMS



Powell uses pointed arms to connect most key cups to the mechanism tubing (*Y-arms are used for cups that are pressed down by the fingers*). Pointed arms — in comparison to Y-arms — look beautiful and are superior in maintaining the correct relationship between the key cups and the tone holes.

Open hole, or French style cups, allow production of multiphonics and provide greater flexibility for the musician to adjust intonation. The primary advantage of a flute with closed hole, or plateau style, cups is greater ease of playing for someone with small hands. Powell's Plug-O's® allow the conversion of French cups into plateau style cups. They seamlessly blend with the cups and can be easily removed when desired.

PITCH & SCALE



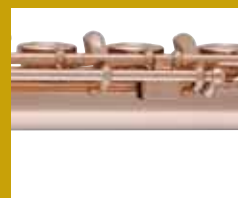
"Pitch" concerns the absolute measurement of middle "A". "Scale" refers to how well the flute plays in tune to itself, from octave to octave and note to note. The Modern Powell Scale plays in tune and is timbrally well balanced throughout the flute's range at a tuning of 2 Hz. above or below its designated pitch (*i.e., a Powell flute pitched to A-442 will play in tune throughout its range between A-440 and A-444*).

FOOT JOINT



The B foot allows the playing of B below middle C and, with the gizmo, facilitates the playing of C4. The optional D# roller is used to slide from the D# lever to and from the C# and C levers.

PINLESS MECHANISM



All Powell Custom, in-line flutes have been made with a pinless left hand for more than 15 years. A pinless right hand mechanism is now also available for all Handmade Custom flutes and is standard on Conservatory models. The elegant design of Powell's pinless mechanism minimizes the chances of a key binding, and provides for smooth key action.



*connect to our friends
and family*



VERNE Q. POWELL® FLUTES, INC.

One Clock Tower Place
Maynard, MA 01754 USA

978-461-6111

www.powellflutes.com

